

### Council ASB Data

Not all complaints of ASB reported to the Council are considered to be ASB and are recorded under separate references of neighbourhood disputes, noise nuisance, flytipping etc. The data presented in this appendix is broken down into the following categories:

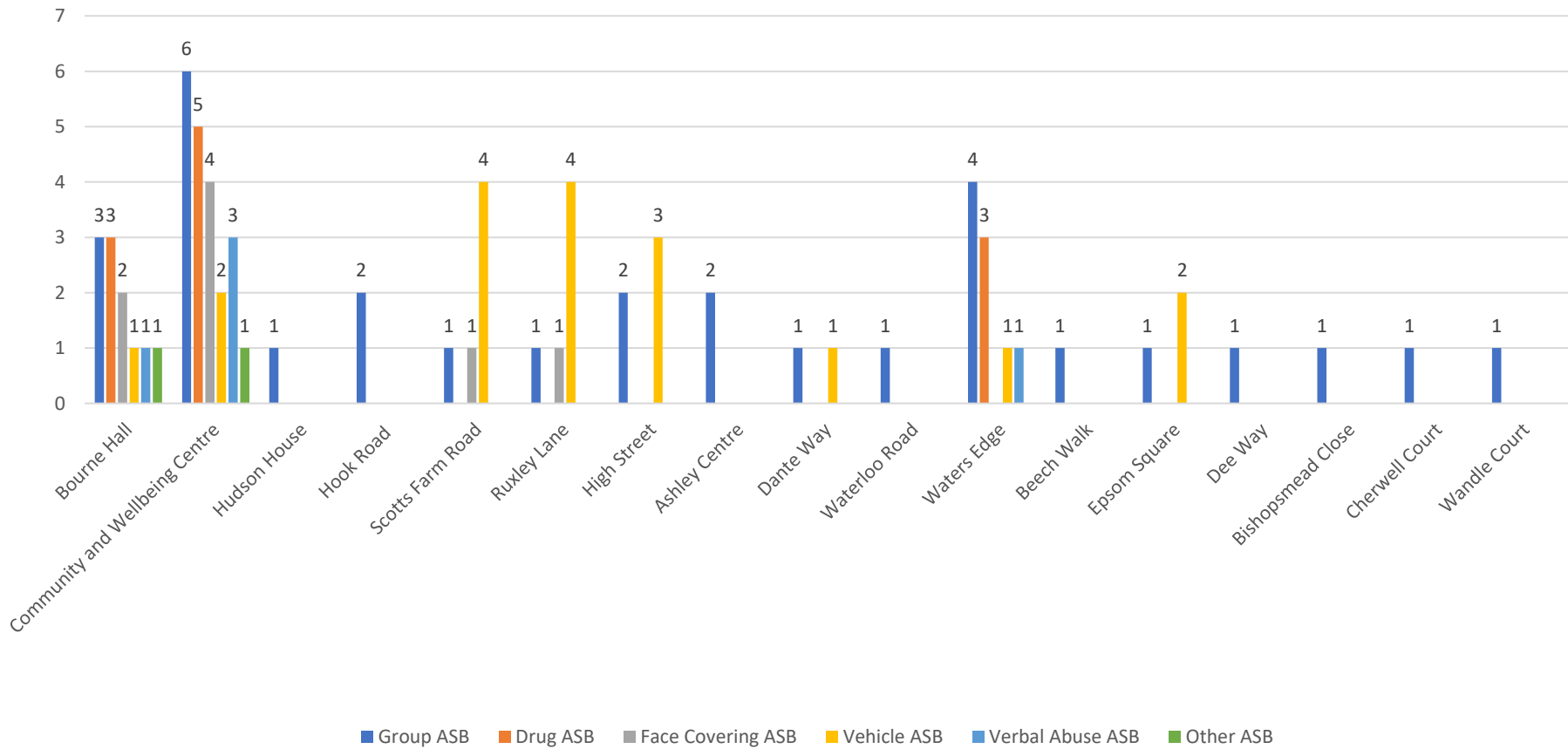
- Group of persons behaving in an antisocial behaviour
- Drug related ASB issues
- ASB perpetrated by persons wearing face coverings
- Vehicular related ASB issues
- Occasions of verbal abuse
- Other ASB not falling into the above.

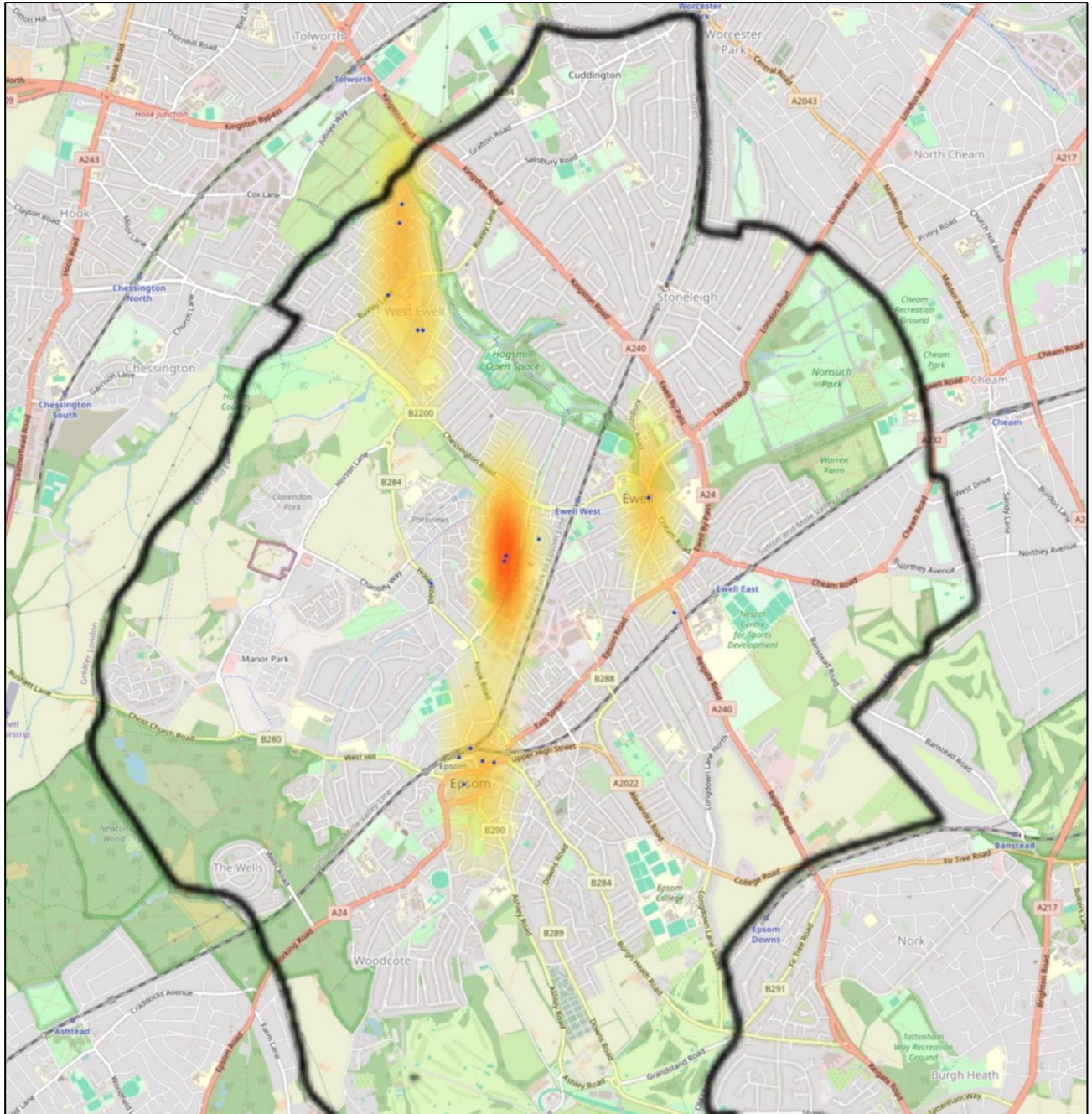
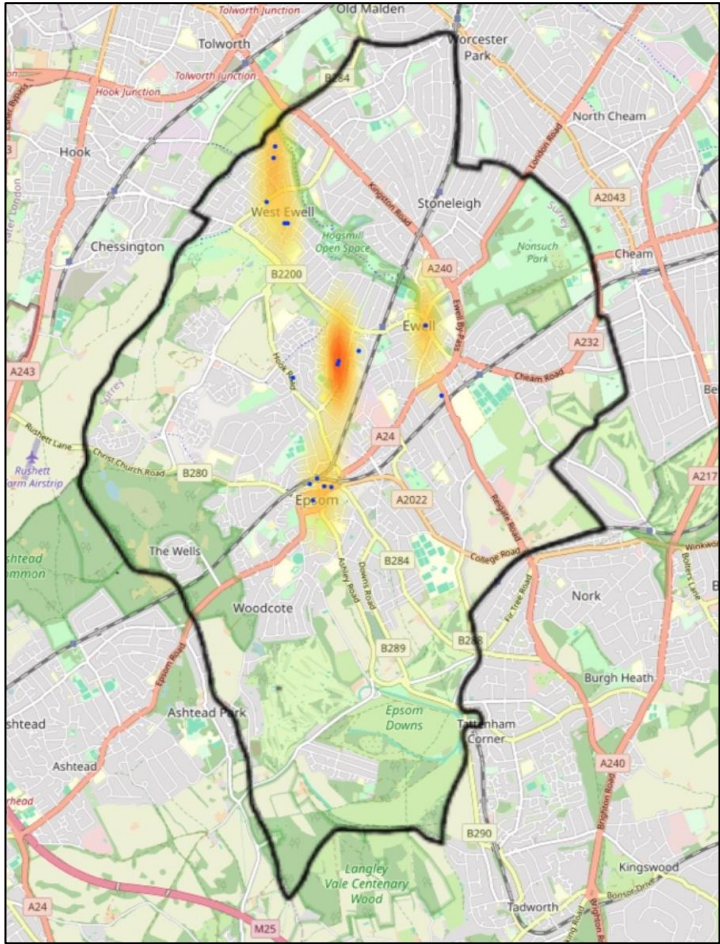
During the period August 2023 to August 2024 there were 74 ASB incidents brought to the attention of Epsom and Ewell Borough Council via a number of methods. These include reports from members of the public, reports from colleagues within the Council and issues brought to the attention of CHaRMM and JAG meetings.

The areas with the highest number of issues are Bourne Hall and the Community and Wellbeing Centre – this is likely due to staff raising complaints to the Community Safety Team more frequently than members of the public may. Members of the public may be more likely to report ASB issues to the Police as their first point of call rather than the Council and so this data set must be read in conjunction with police data. A heatmap has been created highlighting the areas of concern that have been reported to the Council.

Location	Number of Group ASB Issues	Number of Drug ASB Issues	Number of Face Covering ASB Issues	Number of Vehicle ASB Issues	Number of Verbal Abuse ASB Issues	Number of Other ASB Issues	Total
Bourne Hall	3	3	2	1	1	1	11
Community and Wellbeing Centre	6	5	4	2	3	1	21
Hudson House	1						2
Hook Road	2						1
Scotts Farm Road	1		1	4			6
Ruxley Lane	1		1	4			6
High Street	2			3			5
Ashley Centre	2						2
Dante Way	1			1			2
Waterloo Road	1						1
Waters Edge	4	3		1	1		9
Beech Walk	1						1
Epsom Square	1			2			3
Dee Way	1						1
Bishopsmead Close	1						1
Cherwell Court	1						1
Wandle Court	1						1

## Number of Issues Reported to the Council in relation to ASB between August 2023-August 2024





## **Antisocial Behaviour reports into the Council**

Meetings have been held with the Council's Commercial Services Team who have reported an increasing numbers of issues caused by groups of people over the last 12-18 months at community buildings.

### **Bourne Hall**

Issues with groups of people coming to the location at night, vandalising the equipment, bringing alcohol and drugs, and consuming these on site and other antisocial behaviour issues. Most recently, an incident took place on 7<sup>th</sup> August where a group of youths were interfering with a Council Transport from Home vehicle, tried to open the doors whilst the driver was inside and caused the driver to feel alarmed/distressed. They then proceeded to climb onto the tail lift of the moving vehicle.

1. Group of youths causing ASB on roof of building
2. Building equipment stolen off roof
3. Groups of people causing damage to banner rails and placing graffiti on patio furniture
4. Lightning conductors torn from the roof and thrown into park
5. Groups of people causing ASB (pond fishing)
6. Groups of people causing ASB (swimming in pond)
7. Drug ASB – high number of nitrous oxide cannisters found around building and in the car park
8. Groups entering the building and causing ASB inside

### **Community and Wellbeing Centre**

The Wellbeing and Community Centre also report that over the last 12 months they have had issues with groups of people wearing balaclavas, persisting around the car park, starting fires, taking drugs, and intimidating staff. This is beginning to threaten some of the services being offered at this location.

1. Groups of people smoking cannabis on site
2. Groups of people loitering and causing ASB – also laughing and mocking Dementia Hub clients and at times swearing/being abusive to staff
3. Groups of people entering the building and causing ASB inside
4. Groups of people wearing balaclavas and riding mopeds at high speed through the car park and smoking cannabis
5. Groups using the area for drug dealing and drug use
6. ASB litter issues
7. Groups of people starting fires in car park
8. Groups of youths shouting expletives through the windows of the building
9. Groups of youths intentionally throwing items such as footballs into the building via open windows
10. Groups of people throwing items at EEBC meals at home vehicle
11. Groups of people attempting to get inside EEBC transport bus and climbing onto moving vehicles

**The following incidents are reports made to the council concerning other locations in the past 12 months.**

1. Groups of people wearing balaclavas driving at high speed in and around Ruxley Lane/Scotts Farm Road which has been reported to us on numerous occasions
2. Group of people causing antisocial behaviour in Hook Road Car Park
3. Groups of people causing antisocial behaviour in Hudson House Car Park (particularly throwing eggs, putting nails in tyres and drinking
4. Groups of people causing antisocial behaviour in the Ashley Centre Car Park (throwing eggs at cars/people)
5. Groups of Deliveroo/Uber Eats drivers causing antisocial behaviour issues (littering/being abusive)
6. Groups of people taking drugs and causing antisocial behaviour issues on Ruxley Lane/Scotts Farm Road
7. Groups of 10-12 children causing antisocial behaviour issues on Dante Way
8. Groups of kids/teens playing loud music, drinking, and taking drugs on Waterloo Road/Hazon Way
9. Groups of people causing antisocial behaviour issues at Watersedge
10. Groups of people taking drugs and causing antisocial behaviour issues at Ash Court
11. Groups of people taking drugs and causing antisocial behaviour issues on Ruxley Lane
12. Groups of people causing antisocial behaviour issues and vandalising property at Beech Walk
13. Groups of people causing antisocial behaviour at Epsom Square
14. Groups of people causing antisocial behaviour issue at Hudson House
15. Groups of people causing antisocial behaviour issues on mopeds (Delivery Drivers) in Epsom High Street
16. Groups of people causing antisocial behaviour issues at Dee Way
17. Groups of people causing antisocial behaviour issues at Bishopsmead Close
18. Groups of people causing antisocial behaviour issues at Cherwell Court
19. Groups of people causing antisocial behaviour issues at Watersedge
20. Groups of people causing antisocial behaviour issues at Wandle Court
21. Groups of people on mopeds causing antisocial behaviour issues at Kings Church
22. Groups of people causing antisocial behaviour issues at Kiln Lane
23. Groups of people causing antisocial behaviour issues at Hook Road
24. Groups of people causing antisocial behaviour issues at Shawford Road

Locations on CHaRMM/JAG Meetings

1. Long Grove Park – group antisocial behaviour issues
2. Lincoln Walk – group antisocial behaviour and drug issues
3. Hudson House – group antisocial behaviour issues
4. Epsom Square – group antisocial behaviour issues
5. Kiln Lane – group antisocial behaviour issues
6. Ruxley Lane/Scotts Farm Road – group antisocial behaviour issues